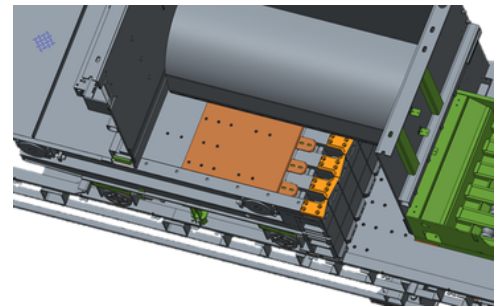


Dimensions and weights:

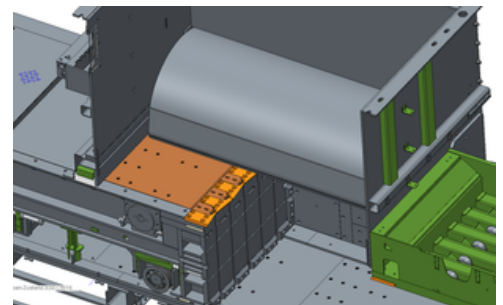
Total length:	approx. 12.000 mm
Height:	approx. 3.500 mm
Width:	approx. 2.500 mm
Hopper width:	1.440 x 1.100 mm
Bale dimensions:	750mm x 1.100 mm (length adjustable)
Machine weight:	approx. 23 Tons



Closing plates (opened)

Performance data:

Pressing force:	90 tons
Drive power:	2 x 45 kW
Bale weight:	450 - 650 KG (depending on the material)



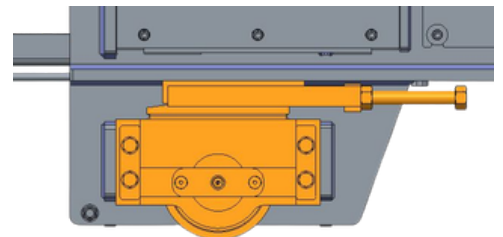
Closing plates (closed)

Throughput according to bulk density:	at 30 kg/m ³ - approx. 8,0 t/h at 50 kg/m ³ - approx. 10,5 t/h at 100 kg/m ³ - approx. 16,5 t/h
---------------------------------------	--

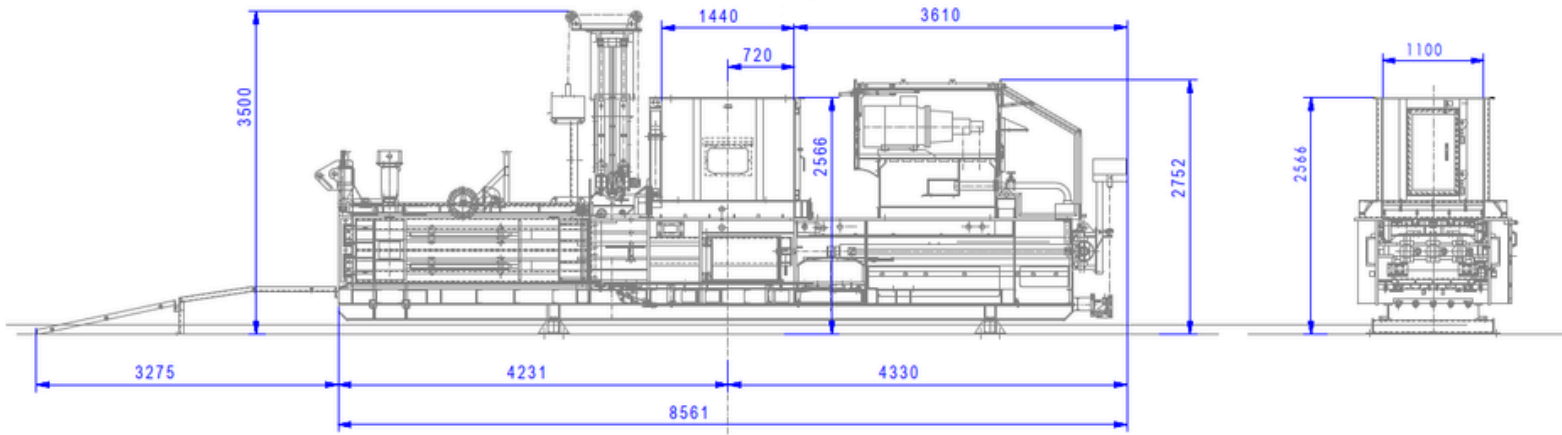
Tying System: 5 fold vertical, wire

Equipped with:

- Height-adjustable rollers on the press ram
- Closing plates above and below the ram
- Remote Maintenance System
- Wear-Resistant guiding rails
- PLC-Control System Siemens S7-200



Height-adjustable rollers on the press ram



Maße und Gewichte:

Länge:	12.000 mm
Höhe:	3.500 mm
Breite:	2.500 mm
Einfüllöffnung:	1.440 x 1.100 mm
Ballenmaß:	750mm x 1.100 mm (Länge einstellbar)
Maschinen Gewicht:	ca. 23 tonnen

Leistungsdaten:

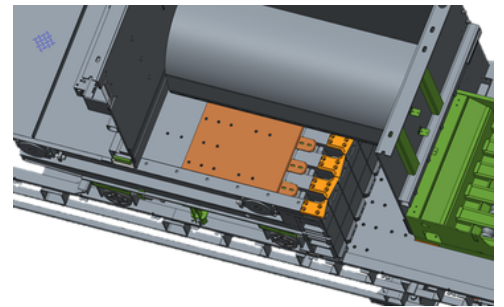
Presskraft:	90 Tonnen
Antriebsleistung:	2 x 45 kW
Ballengewicht:	450 - 650 KG (abhängig vom Material)

Durchsatz in Abhängigkeit der Schüttdichte:	at 30 kg/m ³ - ca. 8 t/h at 50 kg/m ³ - ca. 10,5 t/h at 100 kg/m ³ - ca. 16,5 t/h
--	--

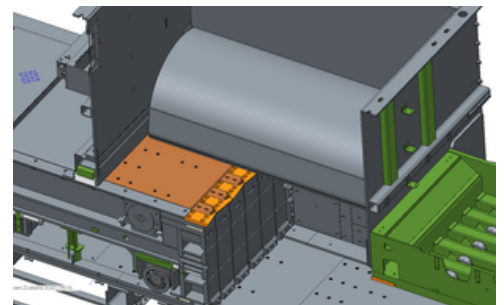
Abbindung: 5-fach vertikal, Draht

Ausgestattet mit:

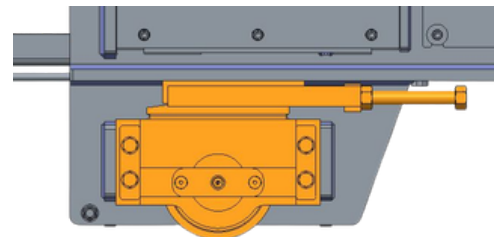
- Höhenverstellbare Laufrollen am Pressschild
- Kolben-Boden-Schieber
- Fernwartung
- Verschleißfeste HARDOX-Laufschienen
- SPS-Steuerung Siemens S7-200



Kolbenschieber (geöffnet)



Kolbenschieber (geschlossen)



Höhenverstellbare Laufrollen am Pressschild